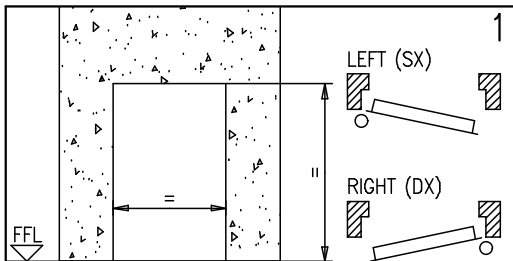


INSTALLATION HANDBOOK, APPLICATION AND MAINTENANCE FOR UNIVER SINGLE-LEAF DOORS REI 60, REI 120 AND MULTIPURPOSE

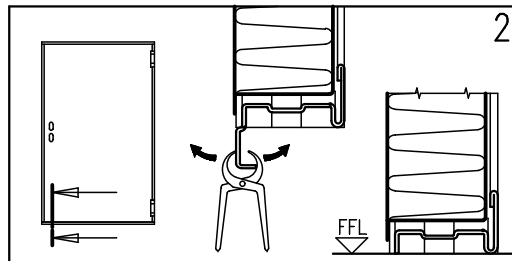
Homologation no. BZ050REI120P023F2
 BZ050REI060P024F2
 BZ050REI060P022F2 BZ050REI120P021F2

151-GB
 5001015/2 - 10/09



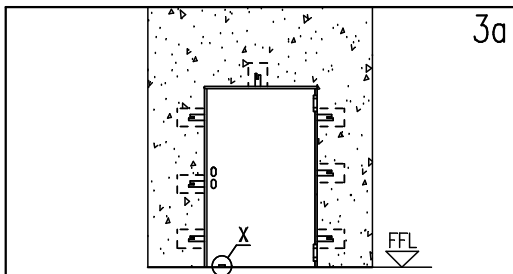
Unpack the door and verify the correspondence between the wall opening and the dimension printed on the coloured sticker applied on the frame. Establish the Finished Floor Level (FFL) and the opening direction.

WITH BRACKETS

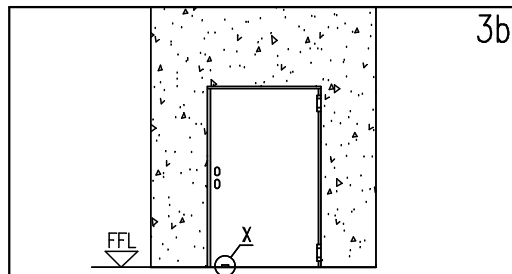


Detach with caution the sill distancer from the frame to prepare door installation at finished floor level (FFL).

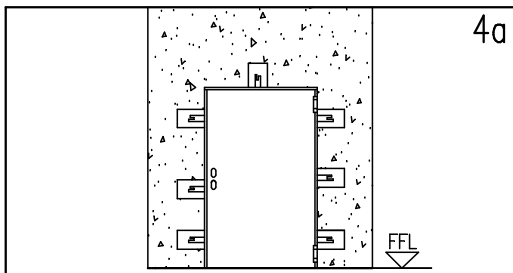
WITH EXPANSION SCREWS



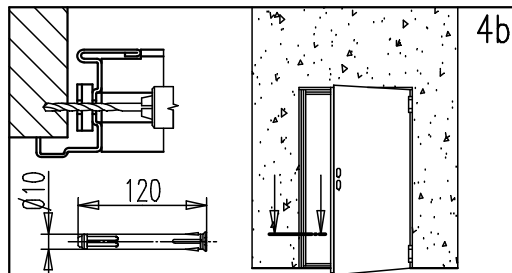
Bend up the frame-brackets and mark on the wall their positions respecting the FFL level. Create the holes in the wall for the brackets. Insert a spacer of 1 cm under the leaf of doors with wall opening L=1350 (X).



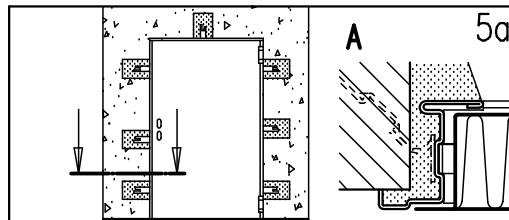
Fasten temporarily the door in the wall opening respecting the plumb-line, the FFL level and the parallelism to the wall. Insert a spacer of 1 cm under the leaf of doors with wall opening L=1350 (X).



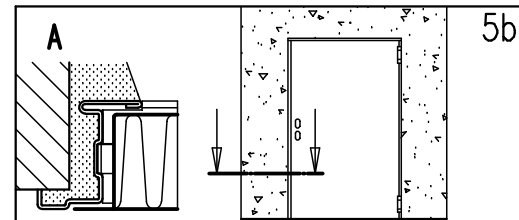
Fasten temporarily the door in the wall opening respecting the plumb-line, the FFL level and the parallelism to the wall.



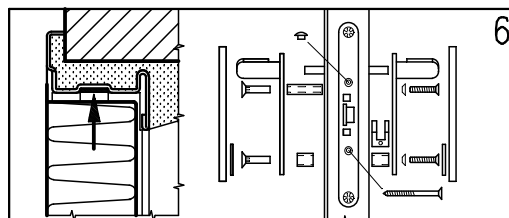
Open the door-leaf and fix the frame at each bracket position with expansion screws type Würth art. 0910436112 (expansion screws not supplied). Close again the door-leaf.



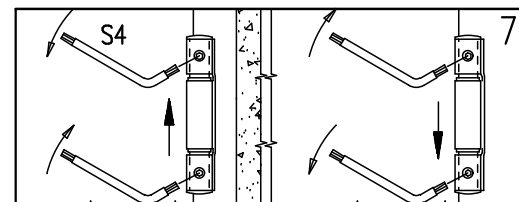
Fix the brackets with fast grip cement. In case of REI doors fill up the space between frame and wall with mortar (detail A) without curving frame.



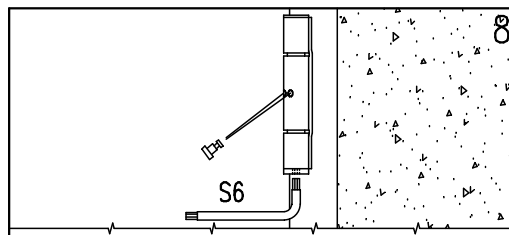
In case of REI doors fill up the space between frame and wall with mortar (detail A) without curving frame.



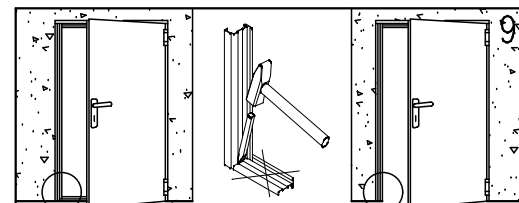
Remove spacers between frame and leaf, install handle and in case of REI doors glue the self expanding gasket on to the top part of frame.



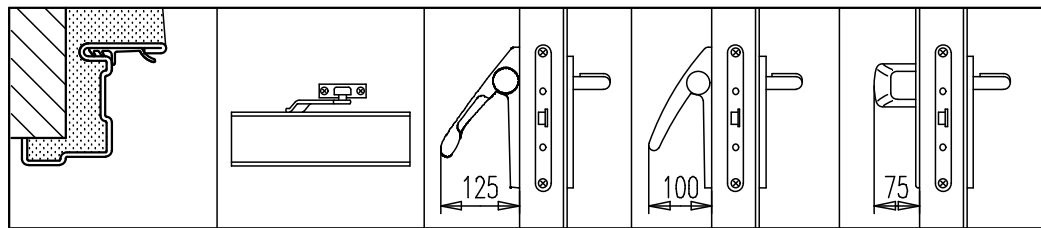
To raise the door leaf: unscrew the upper blocking screw, screw on the lower one, screw on the upper one again. To lower the door leaf: unscrew the lower blocking screw, screw on the upper one. Operation to be carried out with the max. care with the aid of a lever.



Wind up the spring hinge in the opening direction inserting the tension pin. Even if self closing is not needed or overhead doorclosers are installed, wind up the hinge spring anyway blocking it with the tension pin.



With bottom frame Without bottom frame
 In case the bottom threshold is not needed cut it with a chisel. Univer door is government approval with or without the bottom frame.



Optionals: rubber gasket - overhead doorcloser (the spring must be anyhow slightly loaded) - antipanic bar EXUS / TWIST and SLASH.

INSTALLATION HANDBOOK, APPLICATION AND MAINTENANCE FOR UNIVER SINGLE-LEAF DOORS REI 60, REI 120 AND MULTIPURPOSE

I51-GB

GENERAL NOTES

STANDARD: the assemble instructions have to be followed in every detail to respect the test conditions and assure the perfect functioning of the door, including the self-closing. Furthermore a regular service according to Decree 10th March 1998 is necessary. Multipurpose doors are not endowed with thermoexpanding gaskets and closing regulators.

LIABILITY: It is duty of the installer to follow the installation instructions in any detail, specifically point 7 and 8, in order to guarantee the safety of the end-users.

CEMENT WORKS: It's under customer's responsibility to execute the brickworks according to the norm UNI 9723.1990/A1, to fill the frames with grout as indicated in box 5a and 5b (detail A) of the present instructions and to keep the wall integral in particular in the anchor points of the door. In particular for the REI doors.




FINISHINGS: the serial door is finished with an epoxy-polyester powder paint oven-baked at 180° C. The surface is goffered and particularly resistant. In case an additional paint is desired we advise to follow these instructions:

- make smooth the surfaces with sandpaper and dust them
- give a first hand of opaque 2 components epoxide using the product ALCEA EPOX 5203 / 0059 (beige)
- finish the surfaces with enamels or paints to your choice.

CLEANING: the doors are supplied from the factory clean and packed. We suggest to use a clothe and soaped water only. Do not scratch the surfaces.

WARRANTY: the manufacturer gives warranty as per Italian law (C.C.1495). Any claim for missing or damaged goods have to be recorded by inserting a written remark in the delivery notes and must be notified the maximum within eight days from the date of materials receipt.

CURRENT ACCESSORIES MARKED FOR REI DOORS:

Lock Std015:	 CPD-0497-1017	- EN 12209:2003/AC	- 3 M 3 1 0 C 2 H A 2 0
Lock Std015:	 0432-BPR-0082	- EN 12209:2003/AC	- 3 M 3 1 0 C - H A 2 0
Hinges:	 001Aj/0	- EN 1935:02	- 4 7 7 1 1 4 0 14

MAINTENANCE INSTRUCTIONS FOR UNIVER DOORSETS

All fire resistant doorsets and positioned in escape routes need regular maintenance in order to verify that no damage occurred and that they close regularly. The scheduled maintenance shall guarantee that the leaf swings correctly and that the self closing mechanism works properly. The doors shall be kept free from any obstructions. Doors must be kept free from obstructions (Law 19.09.1994, No. 626, M.D. 10.03.1998).

Any 5.000 opening cycles but at least every 6 months the following operations shall be carried out:

Lubricating the ball-bearing hinge.

Lubricating the spring hinge and the spring after removing the tension pin.

Wind up the spring inserting the tension pin. Verify that the closing force is sufficient to shut the door if opened to 30±2°.

Lubricating the lock and the latch.

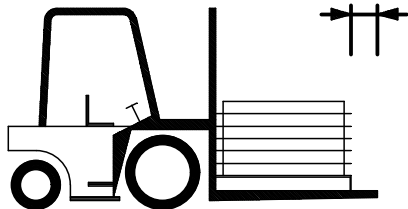
Verify the regular functionality of the doorset's accessories (handle, antipanic bar, overhead doorcloser etc.). Their mobile parts shall be lubricated, too.

In case of irregular functioning of the doorset or its accessories contact an authorized installer or replace the damaged accessories.

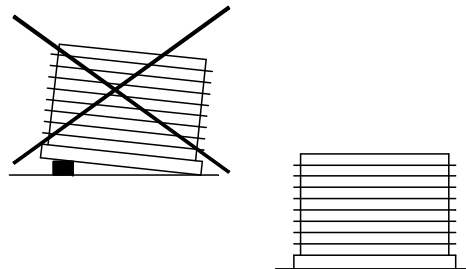
N.B. For lubrication use viscous products.

STORAGE INSTRUCTIONS:

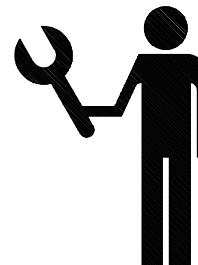
It is duty of the company/person taking over the goods to store them in a suitable place so that they will be protected from the natural agents and from the direct sun rays. If during transportation or truck unloading it rains or snows on the goods it is necessary to remove immediately the nylon film from each leaf and frame, put the goods in vertical position to dry them appropriately. In case of external visible defects on doors, they have to be marked in the copy of the transportation document to be returned to the forwarder and notified to the manufacturer by registered mail within 48 hours. We remember that according to our general conditions intrinsic defects have to be notified to the manufacturer within 8 days from the delivery date by registered mail. Goods with defects never have be utilised or assembled, they should be stored at disposal for controls by the manufacturer appointed person.



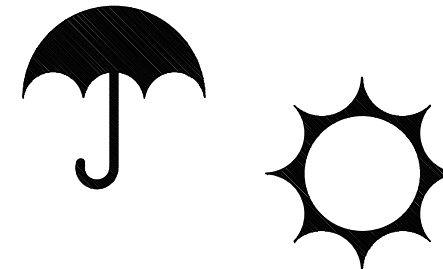
Move the materials with appropriate means.



Store and handle the materials with care.



Assemble by qualified staff only.



Do not expose the materials to the natural agents.