

Denomination **TWIST PANIC EXIT DEVICE**

Commercial codes

**TWIST BM**

**art. 4201101.041**

Producer **Ninz s.p.a. Corso Trento, 2/A  
I-38061 ALA (TN) / ITALY**

Classification no.

1<sup>st</sup> Character - grade 3 - Category of use: high frequency  
2<sup>nd</sup> Character - grade 7 - Durability: 200,000 cycles  
3<sup>rd</sup> Character - grade 7 - Mass of the door: over 200 kg  
4<sup>th</sup> Character - grade B - Suitable for use on fire/smoke doors  
5<sup>th</sup> Character - grade 1 - Safety: suitable for evacuation routes  
6<sup>th</sup> Character - grade 3 - Highly resistant to corrosion 96h  
7<sup>th</sup> Character - grade 2 - Safety of goods: 1000N  
8<sup>th</sup> Character - grade 1 - Projection of exit bar: up to 150 mm  
9<sup>th</sup> Character - grade A - Type of activation: push bar  
10<sup>th</sup> Character - grade A - Suitable for one- or two-leaf doors

Year application **07**  
trademark



N° and year of the regulation **EN 1125:2008**

Certification authority **0425**

N° of CE certificate **1228-CPD-2007**

Classification **3 7 7 B 1 3 2 1 A A**

**Suitable for doors with 1 leaf or for the active leaf (primary) of two-leaf doors up to 1350 x 2880 mm/leaf in size, a mass of up to 300 kg/leaf, mounted on hinges or pivots, fire resistant up to EI<sup>2</sup>120 - REI120 and smoke proof. Projection of exit bar: 100 mm.**

#### SYMBOLS EMPLOYED



##### CAUTION

Indicates a danger that threatens people and/or material goods. Failure to observe the warnings indicated by this symbol may have serious consequences, such as personal injury and property damage.



##### ATTENTION

Indicates a danger that threatens material goods. Failure to observe the warnings indicated by this symbol may result in damage to material goods.



##### NOTICE

Warnings related to important technical aspects.

#### PRODUCT DESCRIPTION

Panic exit device for doors with one leaf and for the active leaf of two-leaf door sets located at emergency exits and activated by push-bars. Composed of galvanized steel controls, black nylon casing and lever, aluminum activation bar, external lever handle and nickel-plated brass cylinder with 3 keys.

**This product does not contain or release any hazardous materials, as per UNI EN regulation 1125 appendix ZA.**

#### OPERATION

While locked by key, the door cannot be opened from the pull side (handle side), while it can always be opened from the push side by depressing the horizontal bar of the TWIST BM panic exit device.

#### WARNINGS

**TWIST panic exit devices activated by horizontal push bars are intended for use on doors with lock mechanisms at emergency exits in areas where panic situations could develop.**

**The safety features of this product are of fundamental importance to ensure its conformity with EN 1125. It is strictly forbidden to introduce any type of modifications apart from those described in the instructions below.**

#### RECOMMENDATIONS

For the panic exit device to ensure high levels of personal safety and appropriate safety levels for material goods, it should only be mounted on doors and doorframes that are in good condition. The installation of the door itself, therefore, should be checked to ensure that it was installed properly and that nothing obstructs its normal movement.

If door gaskets are mounted on the door, make sure they do not inhibit proper functioning of the panic exit device.



For doors with two leaves with their own respective panic exit devices, it is essential to check that each leaf opens when its respective panic exit device is activated and that both leaves open freely when the bars are activated simultaneously.

The fastening instructions in the present document should be followed scrupulously during installation. Once installation is complete, the installer should give this document to the owner of the activity.

The exit bar should be installed so as to maximize its useable length.

For securing the door in the closed position, do not employ any latching devices other than those specified in the present document. This does not preclude the installation of automatic closing devices.

Devices for external access other than those found on the list of certified components on page 4/4 are considered unacceptable.

The TWIST panic exit device is also designed for installation on hollow metal doors with an internal cell structure.

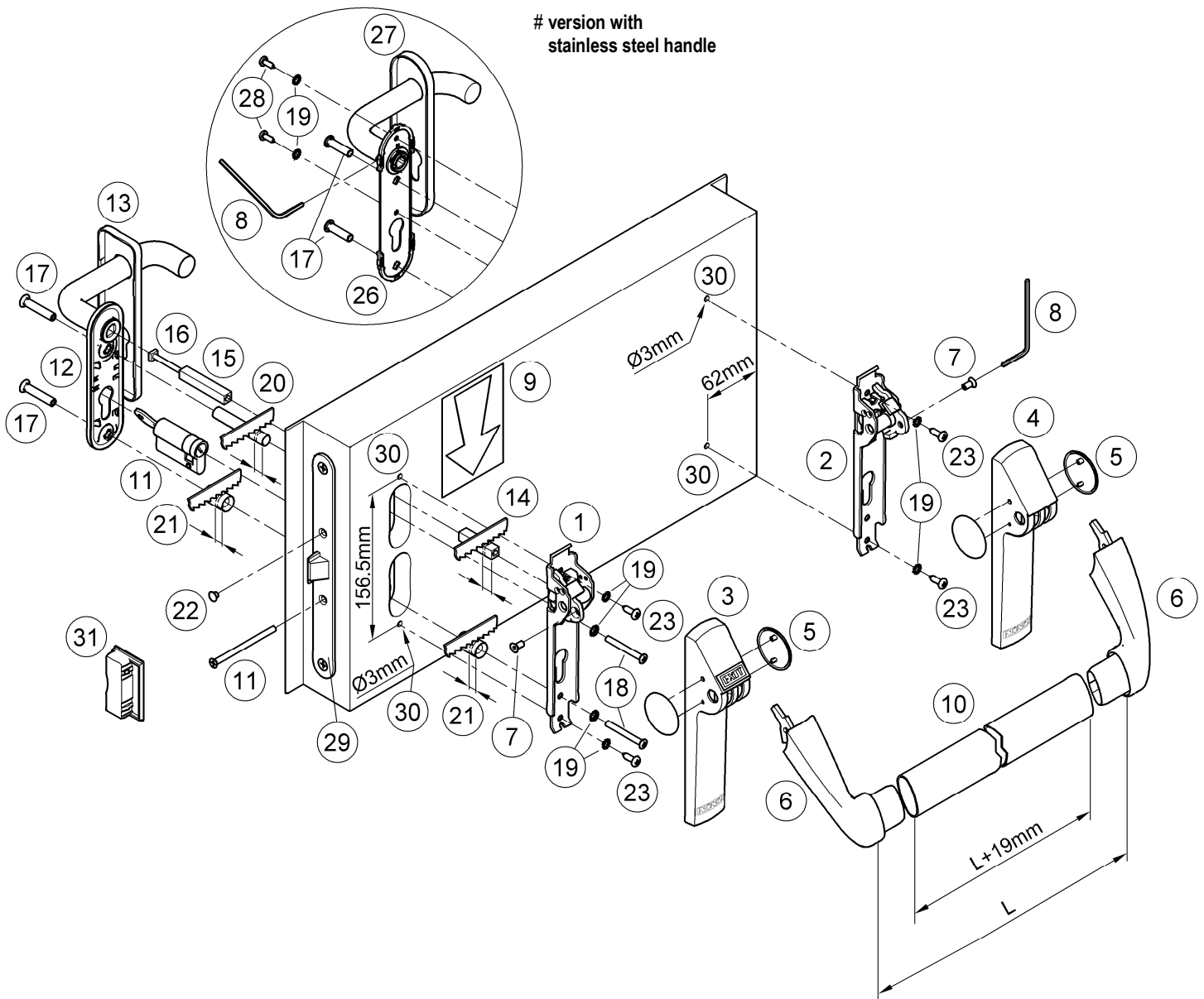
If a 'door closer' is needed to return the door to the closed position, care should be taken not to make the opening step more difficult for children, the elderly and the disabled.

A pictogram (arrow) should be positioned immediately above the activation bar on the internal side of the door.



**All of the included components described herein must be positioned and mounted in conformity with the present document.**

# version with stainless steel handle



**CONTENTS OF THE TWIST BM EXIT DEVICE PACKAGE**

Position	pz	Description	Position	pz	Description
1, 2	01	Twist/Exus mechanism assembly	17	02	M5 threading insert
3, 4, 5	01	Twist/Exus LP casing package with plugs	18	02	M5 screws with rounded countersunk heads
6	01	Package EXUS LP lever arm	19	06	Toothed washer (# package of 8 pieces, stainless steel)
7	02	M5x10 mm screws, hex socket	20	01	Spacer 10.3 x 60.6 mm
8	01	S3 Hex wrench	21	02	Spacer 15.0 x 23.5 mm
9	01	Adhesive pictogram (green arrow)	22	01	Black-colored hole plug Ø 8.8 mm
10	01	Aluminum bar	23	04	Self-tapping screws with cylindrical heads 4.8x16 mm
11	01	Standard nickel-plated half-cylinder with 3 keys and fastener screws	# 26	01	Stainless steel handle with steel mounting plate
12	01	Door handle with stainless steel mounting plate	# 27	01	Stainless steel trim cover plate
13	01	Handle trim cover	# 28	02	Self-tapping screws with cylindrical heads 4.2x13 mm
14, 15	01	Square pivot 9x9x(55+40 mm)	-	01	A034 hole-drilling template
16	01	M5 screws	-	01	TWIST BM exit device installation instructions




Please note that article 4 of the MD of 03 November 2004 obliges the Installer to write up, sign and provide the owner of the activity with a declaration of proper installation that makes explicit reference to the instructions supplied by the exit device manufacturer.

**N.B.** The door is provided with the latch mechanism (29) and keeper (counterstrike) (31) already installed!


**TOOLS REQUIRED**

Medium-sized philips-head screwdriver or electric screwdriver, electric drill with Ø 3 mm and Ø 2 mm drill bits for steel, fine-toothed hack-saw and hack-saw for aluminum.

## IMPORTANT

- Installation should be carried out by qualified personnel only and in strict conformity with the instructions supplied below.
- Proper installation incorporates all supplied components, including the spacers and toothed washers.
-  • Modifications (apart from those explicitly indicated herein) and the use of any components other than those included with the package are strictly forbidden.
- Given its purpose, the TWIST BM panic exit device should always be mounted on the push-side of the door.
- Prior to assembly, check all the contents of the package.
- Confirm that the door is equipped with a panic latch mechanism.
- Check the type of handle being applied to determine the specific instructions to follow.
- The only installation configurations that may be used are described in the outline on pages 2-4.

## INSTALLATION


- Insert the cylinder (11) and fasten it temporarily with the screw (11) before removing the key.
- Adjust the plastic spacers (20 and 21) to the thickness of the leaf so that they do not protrude from the surface of the door.
- Adjust the threaded follower (14) to the thickness of the leaf so that it protrudes 11 mm ± 1 mm from the door surface; be sure to cut it from the smooth part.
- Insert the followers (14 and 15) in the lock mechanism and connect them by screwing the dedicated screw (16) all the way in.
- Insert the threading inserts (17) in the underplate (12 or 26) of the handle, making sure it is well-centered.
- Insert the two spacers (20 and 21) over the threading inserts, apply the handle to the pull-side of the door, being careful to center the follower and inserts in their respective holes.
- Apply the exit bar mechanism (1) to the latch mechanism side (push-side of the door) after inserting the screws (18), toothed washers (19) and spacer (21). Center the follower and screws, starting the screws by hand before fastening them with the screwdriver.
- Use the template to drill holes (30) with the Ø 3 mm drill bit, making sure it is level. If holes are already present, drill them again for the internal reinforcement.
- Fasten the mechanism (1) even more securely with the self-tapping screws 4.8x16mm (23) and their toothed washers (19).
- Fasten the exit bar mechanism (2) at the hinge end using the self-tapping screws 4.8x16mm (23) and their toothed washers (19).
- Put one nylon casing (3) on the latch bolt side of the mechanism and the other (4) on the hinge-side control, hooking them on manually.
- Put the casing (13) on the handle, hooking it to the underplate by hand.
- Apply the link arms (6) and fasten them with the dedicated screws (7), tightening them securely with the included S3 wrench (8).
- Make a precise "L" measurement and cut the aluminum bar (10), adding 19 mm; remove the burs from the bar; remove one link arm, attach the bar and re-fasten the entire assembly.
- Apply the plugs (5).
- Finish fastening the cylinder (11), insert the little black plug (22) in the open hole of the latch mechanism (29).
-  - Push the TWIST BM panic exit device at any point along the horizontal bar, checking to ensure that the latch bolt opens easily and completely. Use the same method to check the external handle, and then check that the latch bolt can be retracted by turning the key. Test the door in both closed and open positions, and if necessary file down the plastic strike (31) for one-leaf doors or the safety lock for two-leaf doors.
- For the stainless steel handle, it is also necessary to fasten the mounting plate (26) with self-tapping screws 4.2x13 mm (28) and their toothed washers (19) after drilling holes in the steel panel with the Ø 2 mm drill bit.
- Put the casing (27) on, hooking it manually to the underplate, insert and tighten the pin firmly with the S3 hex wrench (8).

- Apply the pictogram (9) with the green arrow on the internal surface of the door, just above the activation bar.





- Lastly, use a dynamometer to measure the force required on the horizontal bar to release the latch mechanism. Record this force measurement in the present document.

## USE

- Check whether the door can always be opened with little effort.
- Avoid unnecessary strains on or handling of the lever and exit bar.
- Protect the bar from external atmospheric agents.
- Ensure that nothing obstructs free movement of the exit bar.
- Do not paint the latch mechanism.
- Use the bar properly - do not pull it in the opposite direction.
- Do not leave the key in the lock.
-  • Ensure that any damaged or malfunctioning parts are replaced immediately.

## MAINTENANCE

To ensure that door usage conforms with regulations, the following maintenance checks should be carried out at least once a month:

- Verify that all of the installed components correspond with those listed in the present instructions, and that no latching devices other than those originally installed have been added to the door.
- Inspect and activate the panic exit device to verify that all of its components are in satisfactory operational condition.
- Use a dynamometer to confirm that the release force shows no significant differences from the forces recorded at the time of installation.
-  - Check whether all screws are fully tightened, tightening any that may have loosened.
- Check whether the exit bar, handle and key can be activated with minimal effort, and that the latch bolt retreats from the strike plate without offering resistance. If the door has become difficult to open due to friction between the latch bolt and strike plate, the resistance can be reduced by filing the strike plate down to the appropriate height.
- Activate the EXUS LP BM panic exit device at both ends of the bar, checking for full retraction of the latch bolt in both cases.
- Ensure that the latch bolt exits completely when the exit bar is released.
- Check the aluminum bar and replace it if any damage or deformities are detected.
-  - Check whether the bushings and strikes are blocked in any way, eliminating any obstructions.
- This product requires no special maintenance. Grease spray should be used to lubricate the internal workings of the latch mechanism, handle and exit bar on a regular basis - the latter has a hole on the underside of its casing for this purpose.
- Use mild detergents for normal cleaning.



**Any adjustments that become necessary must be carried out by qualified personnel using original NINZ replacement parts.**



**The owner of the activity is responsible for keeping the declaration of correct installation on file, conducting proper exit bar maintenance in accordance with all of the manufacturer's maintenance guidelines, keeping maintenance and check-up records and preserving the present document.**

		<b>ATTESTATO DI CONFORMITÀ</b> DIRETTIVA 89/106/CEE <b>CERTIFICATE OF CONFORMITY</b> DIRECTIVE 89/106/CEE		 0425	
<small>Questo certificato è rilasciato in conformità a quanto prescritto dall'Art.6 par.2 lettera b) del DPR 21 aprile 1993, n°246 (Direttiva 89/106/CEE) ed attesta la conformità del prodotto di seguito identificato agli Art.1, Art.2 ed allegato A del DPR 21 aprile 1993, n°246 (Direttiva 89/106/CEE)          This certificate has been issued in conformity to what prescribed by the Art.6 par.2 letter b) of the DPR 21/04/1993, n°246 (Directive 89/106/EC) and certifies the conformity of the product described below to the Art.1, Art.2 and attachment A of DPR 21/04/1993, n°246 (Directive 89/106/EC)</small>					
<b>ATTESTATO N°</b>		<b>1228 - CPD - 2007</b>		<b>CERTIFICATE N°</b>	
<b>Organismo notificato</b> ICIM S.p.A. - Piazza A. Diaz, 2 - 20123 MILANO (ITALY)			<b>Notified Body</b> N° d'identification: 0425		
<b>Dati Fabbricante</b> Sede legale: NINZ S.p.A. Corso Trento, 2/A 38061 ALA (TN) ITALY Unità operativa:			<b>Manufacturer</b> Head office: Operative unit:		
<b>Dati prodotto</b> Tipologia: <b>DISPOSITIVI ANTIPANICO PER USCITE DI SICUREZZA AZIONATI MEDIANTE UNA BARRA ORIZZONTALE PANIC EXIT DEVICES</b> Denominazione: Dispositivo antipanico serie "TWIST" "EXUS LP" "EXUS LA" "EXUS LX" Serrature antipanico art. AP16/18, SCA 1 3201001.019/020, 4506002.17 (V) Controserrature antipanico art. AP020P, AP020U, 4506002.18 (V) Dispositivo superiore art. 3105080, 3105024, 4506003 (V) Riscontro asta art. 2401036, 2401046, 2401044, 4506005 (V) Boccola pavimento art. 2401001, 2401007, 3105091, 4509006 (V) Aste verticali art. 3305015, 3305016, 3305002, 4509003 (V) Riscontro serratura art. 2401006, 2401005, 2401015, 2401014, 4506006 (V) Comandi esterni art. BM, BSP, BS, BMC, BC, B, A, BM inox, BM alu, BSP inox, BSP alu			<b>Product</b> Type:		
Sistema di attestazione della conformità: 1			Attestation of conformity:		
Norma di riferimento: EN1125:2008			Standard:		
Classificazione: 3   7   7   B   1   3   2   1   A   A			Classification:		
<b>Eventuali estensioni</b> Nessuna / None			<b>Extensions</b>		
<b>Eventuali condizioni di subordinazione della Certificazione CE</b> Nessuna / None			<b>Possible conditions of subordination of the CE Certification</b>		
<small>Il presente attestato è valido esclusivamente per il prodotto indicato. Eventuali varianti da apportare devono essere approvate da ICIM S.p.A.          The present issue is valid only for the product described above. Possible changes to be brought in have to be approved by ICIM S.p.A.</small>					
<b>Data di emissione</b> First issue: 18/04/2007		<b>Emissione corrente</b> Current issue: 07/05/2009		<b>Data di scadenza</b> Expiring date: 17/04/2017	
ICIM S.p.A. Il Presidente Ing. Tullio Badino					

REPLACEMENT PARTS (see expanded drawing, pages 2-4)		
Position	Code	Description
1, 2, 3, 4, 5, 6, 7, 8, 9	3102004	Twist Base
1, 2	3105113	Twist/Exus mechanism assembly
3, 4, 5	3105104	Twist/Exus LP casing package with plugs
6	3105122	Package lever arm Twist
7, 8	3105026	Twist/Exus bag
10	4204009	Aluminum bar package anodized or painted aluminum
12, 13, 14, 15, 16, 17, 18, 19, 20, 21, 22, 23	4211101.001	Twist/Exus black plastic BM package
# 26, 27, 14, 15, 16, 17, 18, 19, 20, 21, 22, 23, 28	4211101.021	Twist/Exus stainless steel BM package
11	4202103.001	Standard nickel-plated half cylinder 40/10 for Proget and Univer s60
11	4202103.002	35/10 for Univer s50
11	4202103.003	30/10 for Rever
29	3201001.016	Push-activated panic latch mechanism
31	2401006	Proget latch mechanism strike plate
31	2401005	Univer s60 latch mechanism strike plate
31	2401015	Univer s50 latch mechanism strike plate
31	2401014	Rever latch mechanism strike plate



**ANY REPLACEMENTS MUST USE ORIGINAL NINZ REPLACEMENT PARTS FROM ITS FULL CERTIFIED SYSTEM!**

### Certified TWIST BM components

Panic exit device series:	"TWIST BM"
Panic latch mechanism series:	art. AP16/18, SCA 1 3201001.019/020
Counterstrike latch mechanism:	art. 2401006, 2401005, 2401015, 2401014
External control:	art. BM, stainless steel BM, ELECTRIC HANDLE

### PROPER DISASSEMBLY

When some or all of the exit bar needs to be replaced, the general guideline is to reverse the order of the original installation instructions. To replace the latch mechanism, all of the exit bar parts in the latch mechanism zone must be disassembled, including the external handle. The latch mechanism itself (29) can be removed by unscrewing the two frontal screws.



This operation should be carried out with great care in order not to ruin or displace the internal workings of the latch mechanism!

### MAINTENANCE RECORD

Date	Description of intervention	Release force checked	Operator



These instructions must be given to the owner of the activity, who must preserve them for recording the maintenance operations carried out on the panic exit device.