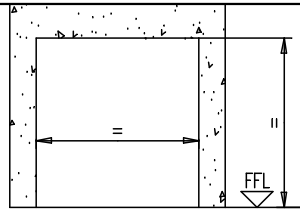


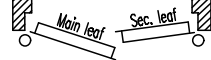
INSTALLATION HANDBOOK, APPLICATION AND MAINTENANCE OF REVERSIBLE AND NON-REVERSIBLE, UNIVER DOUBLE LEAF DOORS REI 60, REI 120 AND MULTIPURPOSE

168-GB

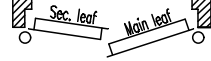
5001505/2 - 10/09



Opening pull left (SX)

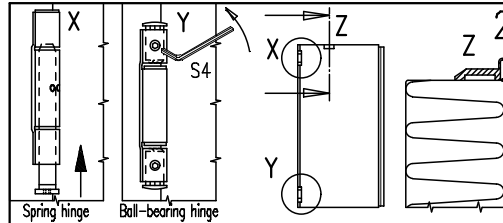


Opening pull right (DX)

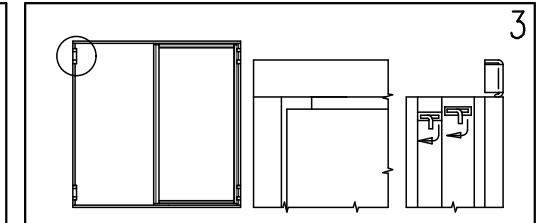


1

Unpack the materials, in case of REI doors remove from the back of the frame the thermo expanding gasket FC that will be used for the operation in pos. 9. Verify the correspondence of the door's measures with the wall opening and the opening pull. The reversible door will be even delivered from the factory with opening pull DX (right), to change the opening pull in SX (left) see the attached instruction.

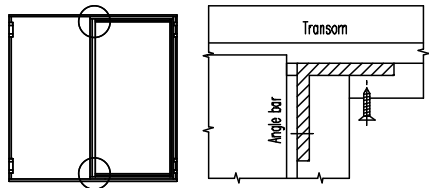


Fix the hinge frame on the secondary leaf putting in the pin for the spring hinge and screwing on the blocking screw of the ball bearing hinge. Perform the operation very carefully. Insert on the top and bottom the two spacers in equipment.



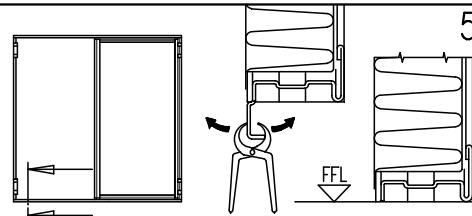
Join together the two transoms and the other hinge frame with the fixing flaps. Bend the flaps on the four corners to block the frame.

3



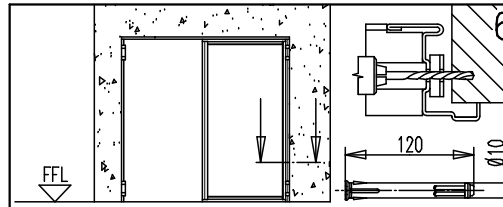
4

To make easier the following operation, release the prefixed screws of the angle bars placed at the top and bottom of the central joint. Fix the two transoms to the secondary leaf and screw them with the screws in equipment with the handle box. Fix very well all screws.

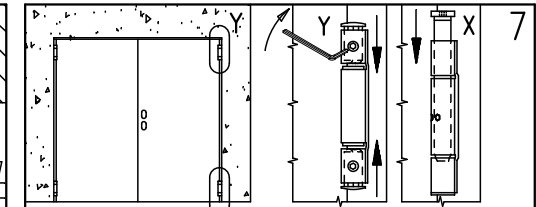


5

Once established the finished floor level (FFL) and decided that the door will be leaned without bottom frame, cut the jutting out fin of the lower transom so to lay the profile correctly on the finished floor level.

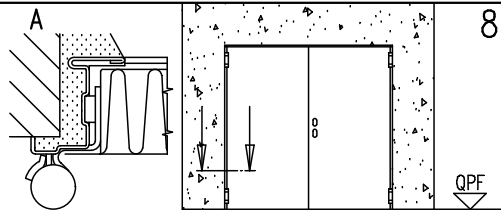


Plug the frame, the main leaf side, at presetted holes. In case of fire-rated doors use expansion screws type Würth, Art. 0910 436 112 not included in delivery. It is important to keep the plumbline, the FFL and the parallelism of the wall.



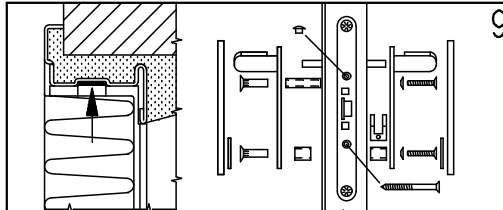
7

Unscrew the angle bars, open the secondary leaf and fix the frame to the wall, working like at the pos. 6. Assemble the main leaf and set the hinges with the same process like in the pos. 2.



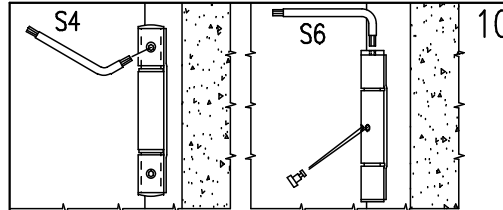
8

In case of REI doors fill up the space between the frame and the wall with mortar (detail A) without curving the frame.



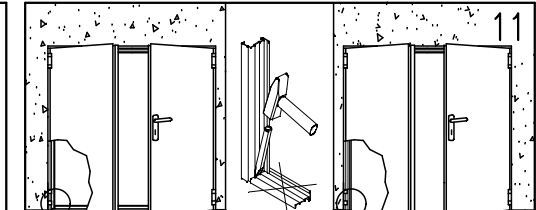
9

In case of REI doors set the thermo expanding gasket on the upper transom, but cut it before in two pieces with a measure that is going from the roller insert to the opposite angle of the frame. Set the handle on the main leaf.



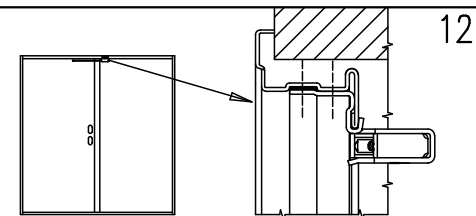
10

Remove all the plastic spacers between frame and leaf. Regulate the height of the leaf with the blocking screw of the ball bearing hinges. Wind up the springs in the opening direction and insert the tension. Even if self closing is not needed or overhead doorclosers are installed, wind up the hinge spring anyway blocking it with the tension pin.



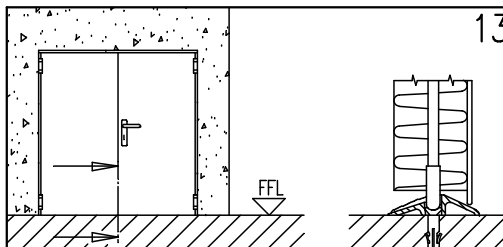
11

In case the treshold is not needed cut it with a chisel.



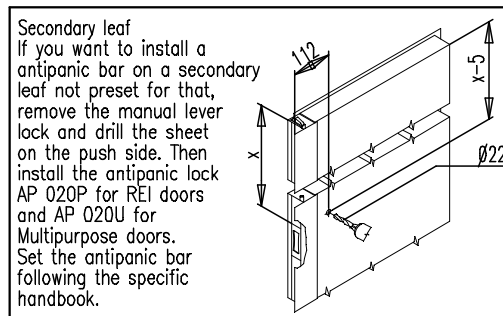
12

In case of REI doors set the bracket and the closing regulator following the handbook included in the kit RC/STD delivered with the door equipment.

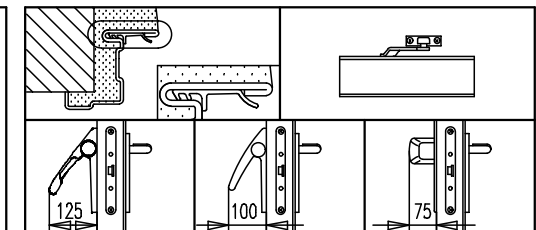


13

For installation without treshold fix the catch set to the floor.



Secondary leaf
If you want to install a antipanic bar on a secondary leaf not preset for that, remove the manual lever lock and drill the sheet on the push side. Then install the antipanic lock AP 020P for REI doors and AP 020U for Multipurpose doors. Set the antipanic bar following the specific handbook.



Accessories: rubber seal - overhead doorcloser (the spring hinge must be anyhow slightly loaded) - antipanic bar EXUS, TWIST and SLASH.

INSTALLATION HANDBOOK, APPLICATION AND MAINTENANCE OF REVERSIBLE AND NON-REVERSIBLE, UNIVER DOUBLE LEAF DOORS REI 60, REI 120 AND MULTIPURPOSE

168-GB

GENERAL NOTES:

STANDARD: the assemble instructions have to be followed in every detail to respect the test conditions and assure the perfect functioning of the door, including the self-closing. Furthermore a regular service according to Decree 10th March 1998 is necessary. Multipurpose doors are not endowed with thermoexpanding gaskets and closing regulators.

LIABILITY: It is duty of the installer to follow the installation instructions in any detail, specifically point 2, 7 and 10, in order to guarantee the safety of the end-users.





CEMENT WORKS: It's under customer's responsibility to execute the brickworks according to the norm UNI 9723.1990/A1, to fill the frames with grout as indicated in box 5a and 5b (detail A) of the present instructions and to keep the wall integral in particular in the anchor points of the door. In particular for the REI doors.

FINISHINGS: the serial door is finished with an epoxy-polyester powder paint oven-baked at 180° C. The surface is goffered and particularly resistant. In case an additional paint is desired we advise to follow these instructions:
 - make smooth the surfaces with sandpaper and dust them
 - give a first hand of opaque 2 components epoxide using the product ALCEA EPOX 5203 / 0059 (beige)
 - finish the surfaces with enamels or paints to your choice.

CLEANING: the doors are supplied from the factory clean and packed. We suggest to use a clothe and soaped water only. Do not scratch the surfaces.

WARRANTY: the manufacturer gives warranty as per Italian law (C.C.1495). Any claim for missing or damaged goods have to be recorded by inserting a written remark in the delivery notes and must be notified the maximum within eight days from the date of materials receipt.

CURRENT ACCESSORIES MARKED FOR REI DOORS:

Lock Std015:		CPD-0497-1017	- EN 12209:2003/AC	- 3 M 3 1 0 C 2 H A 2 0
Lock Std015:		0432-BPR-0082	- EN 12209:2003/AC	- 3 M 3 1 0 C - H A 2 0
Hinges:		001AJ/0	- EN 1935:02	- 4 7 7 1 1 4 0 14
Closing regulator RC/STD:		0425-1153	- EN 1158:2003	- 3 5 5/3 1 1 4

MAINTENANCE INSTRUCTIONS FOR UNIVER DOORSETS

All fire resistant doorsets and positioned in escape routes need regular maintenance in order to verify that no damage occurred and that they close regularly. The scheduled maintenance shall guarantee that the leaf swings correctly and that the self closing mechanism works properly. The doors shall be kept free from any obstructions. Doors must be kept free from obstructions (Law 19.09.1994, No. 626, M.D. 10.03.1998).

Any 5.000 opening cycles but at least every 6 months the following operations shall be carried out:

- Lubricating the ball-bearing hinge.
- Lubricating the spring hinge and the spring after removing the tension pin.
- Wind up the spring inserting the tension pin. Verify that the closing force is sufficient to shut the door if opened to 30±2°.
- Lubricating the lock and the latch.
- Verify the functionality of the secondary leaf's rods and lubricate its guide rail.
- Clean the hole of the floor catch set.
- Lubricate the lock and the rod blocking device (top).
- Verify the regular functionality of the closing regulator (arm position perpendicular to the main leaf).
- Lubricate the mobile parts of the closing regulator.

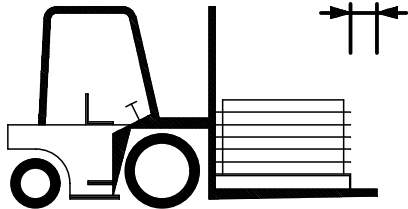
Verify the regular functionality of the doorset's accessories (handle, antipanic bar, overhead doorcloser etc.). Their mobile parts shall be lubricated, too.

In case of irregular functioning of the doorset or its accessories contact an authorized installer or replace the damaged accessories.

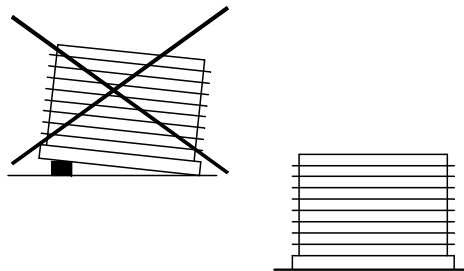
N.B. For lubrication use viscous products.

STORAGE INSTRUCTIONS:

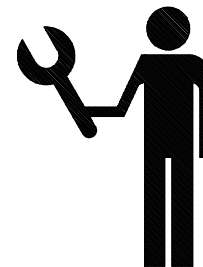
It is duty of the company/person taking over the goods to store them in a suitable place so that they will be protected from the natural agents and from the direct sun rays. If during transportation or truck unloading it rains or snows on the goods it is necessary to remove immediately the nylon film from each leaf and frame, put the goods in vertical position to dry them appropriately. In case of external visible defects on doors, they have to be marked in the copy of the transportation document to be returned to the forwarder and notified to the manufacturer by registered mail within 48 hours. We remember that according to our general conditions intrinsic defects have to be notified to the manufacturer within 8 days from the delivery date by registered mail. Goods with defects never have be utilised or assembled, they should be stored at disposal for controls by the manufacturer appointed person.



Move the materials with appropriate means.



Store and handle the materials with care.



Assemble by qualified staff only.



Do not expose the materials to the natural agents.